

# **PHONETICS**

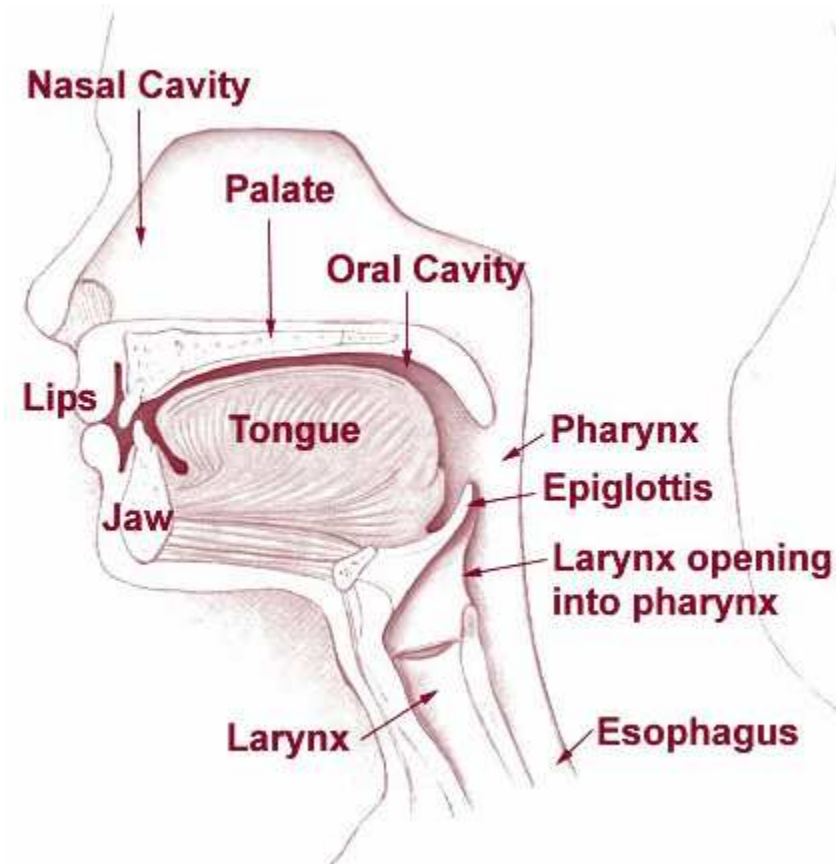
(Suggested reading: Denning&Leben's Chapter 5)

***Phonetics: the science that studies speech sounds (the different sounds of language)***

What for?

- to sort out the difference between pronunciation and spelling;
- to describe and understand some of the allomorphy in English morphemes  
e.g *conclude*, *conclusion*;
- to understand the relation between one sound and another by comparing their properties (each sound can be analyzed into a set of properties);
- to understand changes internal to English (e.g. vowel shift) and how certain words changed when they entered English from other languages.

**Articulatory Apparatus and Speech Organs**  
**(see also Denning&Leben p.59)**



[http://training.seer.cancer.gov/ss\\_module06\\_head\\_neck/unit02\\_sec02\\_anatomy.html](http://training.seer.cancer.gov/ss_module06_head_neck/unit02_sec02_anatomy.html)

## **Speech Sounds Properties (or Features)**

- vowels / consonants
- oral / nasal
- voiced / voiceless
- place and manner of articulation

# IPA (International Phonetic Alphabet)

(see also Pronunciation Guide, Denning&Leben)

## Consonants

<b>PLACE</b>	<b>Bilabial</b>	<b>Labio-Dental</b>	<b>Inter-dental</b>	<b>Alveolar</b>	<b>Alveo-palatal</b>	<b>Palatal</b>	<b>Velar</b>	<b>Glottal</b>
<b>MANNER</b>	vl vd	vl vd	vl vd	vl vd	vl vd	vl vd	vl vd	vl vd
<b>Stop</b>	p b			t d			k g	ʔ
<b>Fricative</b>		f v	θ ð	s z	š ž			h
<b>Affricate</b>					č ĵ			
<b>Nasal</b>	m			n			ŋ	
<b>Liquid</b>								
<b>Lateral</b>				l				
<b>Rhotic</b>				r				
<b>Semivowel</b>						y	w	

# IPA (International Phonetic Alphabet)

(see also Pronunciation Guide, Denning&Leben)

PLACE	Bilabial	Labio-Dental	Inter-dental	Alveolar	Alveo-palatal	Palatal	Velar	Glottal
MANNER	vl vd	vl vd	vl vd	vl vd	vl vd	vl vd	vl vd	vl vd
Stop	p b			t d			k g	ʔ
Fricative	β	f v	θ ð	s z	š ž		x ɣ	h
Affricate					č ĵ			
Nasal	m			n			ŋ	
Liquid Lateral Rhotic				l ł r ɾ				
Semivowel						y	w	

## Allophones

- Aspiration: [p<sup>h</sup>, t<sup>h</sup>, k<sup>h</sup>]  
e.g.: “pit” vs. “spit” [p<sup>h</sup>ɪt] vs. [spɪt]
- Velarized (“dark”) L: l → [ɫ]  
e.g.: “peel” [p<sup>h</sup>i: ɫ]
- Flap (or tap): t or d → [ɾ]  
e.g.: “later” [le<sup>y</sup>ɾə̃]

## Vowels

- the quality of vowels is determined by the position of the tongue, lips and lower jaw
  - e.g.: - tongue: front or back; high or low
  - lips: rounding
- Length
- Tense vowels: [i, e, o, u] vs. Lax vowels: [ɪ, ε, ɔ, ʊ]
- Monophthongs
- Diphthongs
- Stress

## **Assimilation**

- Adjacent sounds that are already partially similar to one another often become even more similar, in fact sometimes identical.

e.g.: *in-* + *legal* > *illegal*; *in-* + *regular* > *irregular*

## **Dissimilation**

- Similar or identical sounds become less alike.

e.g.: French *marbre* > English *marble*